

Managing major building projects in *places of worship*

REVD CANON CHRIS BARLEY



**Historic Religious
Buildings Alliance**
a group within the Heritage Alliance



St Margaret's Church,
Swinton, Rotherham

There has been a church in Swinton since the middle of the 12th century. The Norman chapel was demolished in 1816 and a new church built; unfortunately in 1897 this church was destroyed by fire – the only part to survive the fire was the church tower.

The people of Swinton started to raise money and another church was built on to the existing tower. By the year 2001 the church was in need of major repair and re-ordering. Serious thought was given to how we could make St Margaret's church a building that could not only be a place of worship, but a place for the whole community to use and enjoy. In order to achieve this vision, we needed to raise £345,000.00.

The money raised was used to repair the tower and create a welcoming entrance to the church., toilet and kitchen facilities were installed including a disabled toilet., reorder the chancel and the Lady Chapel and also improve the lighting and heating. These changes have helped to create a church that is used and loved by the people of Swinton.



The exterior from the South West. The tower was extensively conserved in 2005 by Church Conservation Ltd

The tower
following
conservation

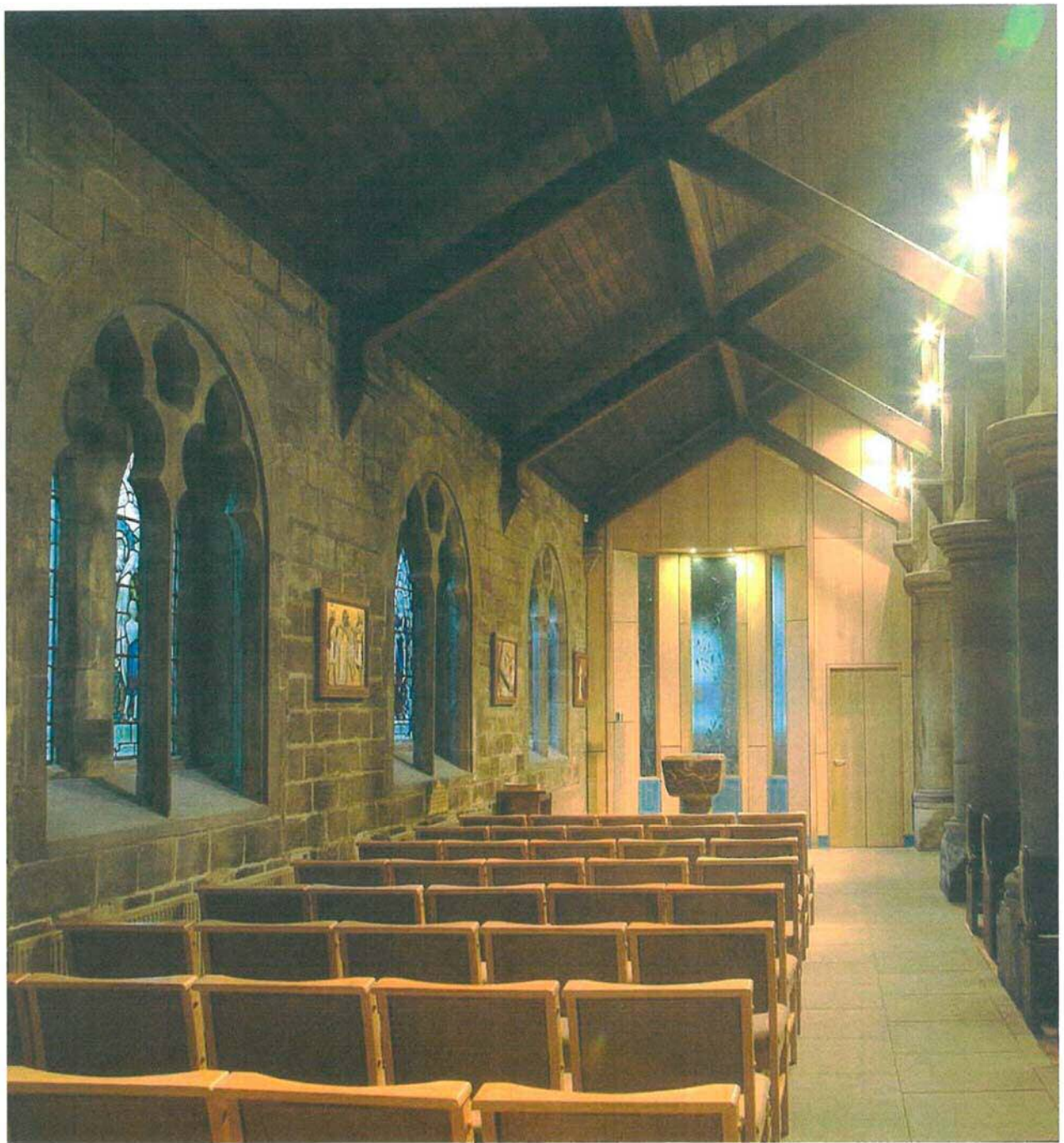




The nave before re-ordering – gloomy and over-pewed!



North Aisle before re-ordering



And now – the view along the South Aisle. Top lighting really emphasises the dichroic glass fish in Martha Maguire's design for the cast glass Baptistery screen

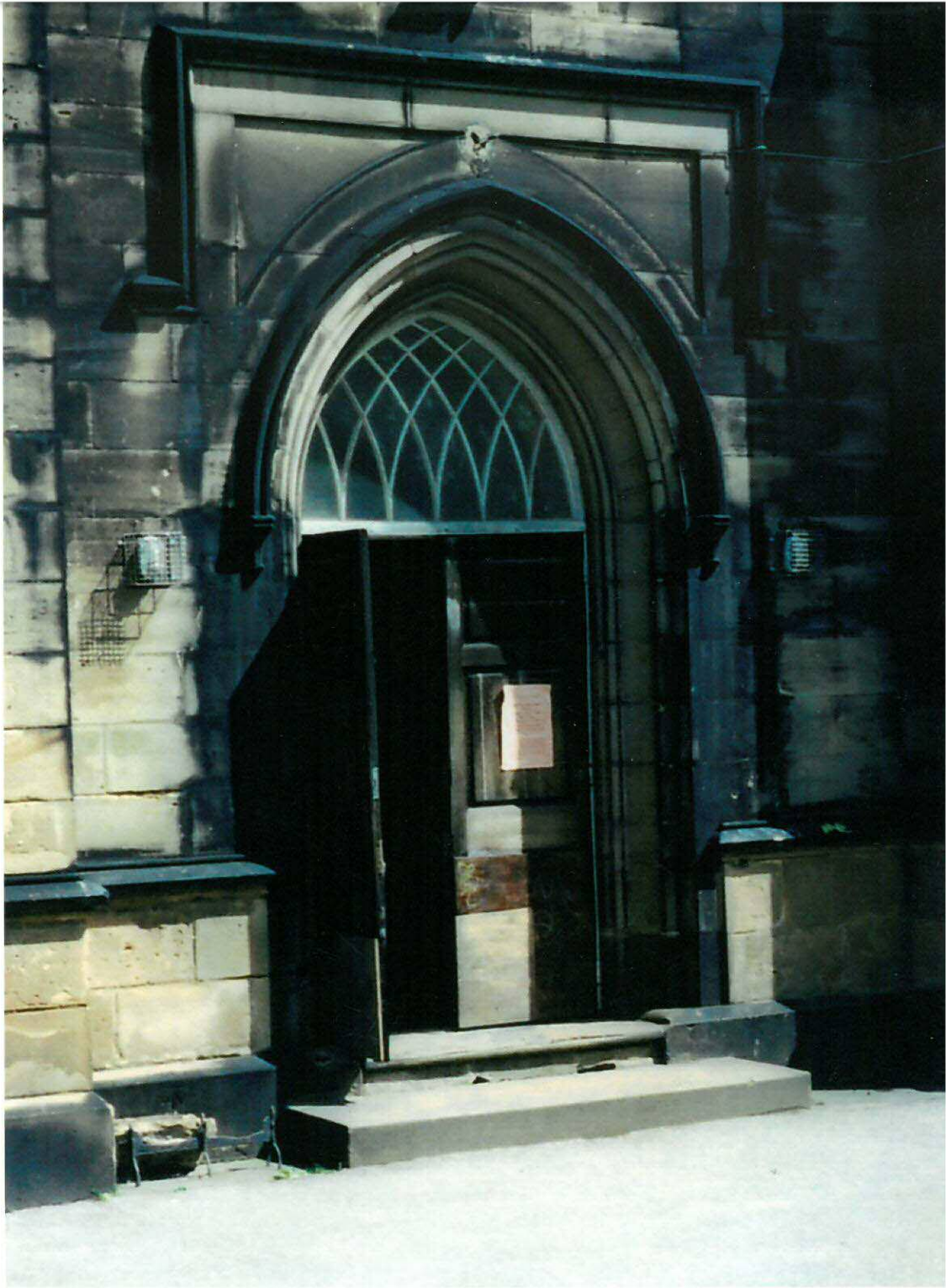


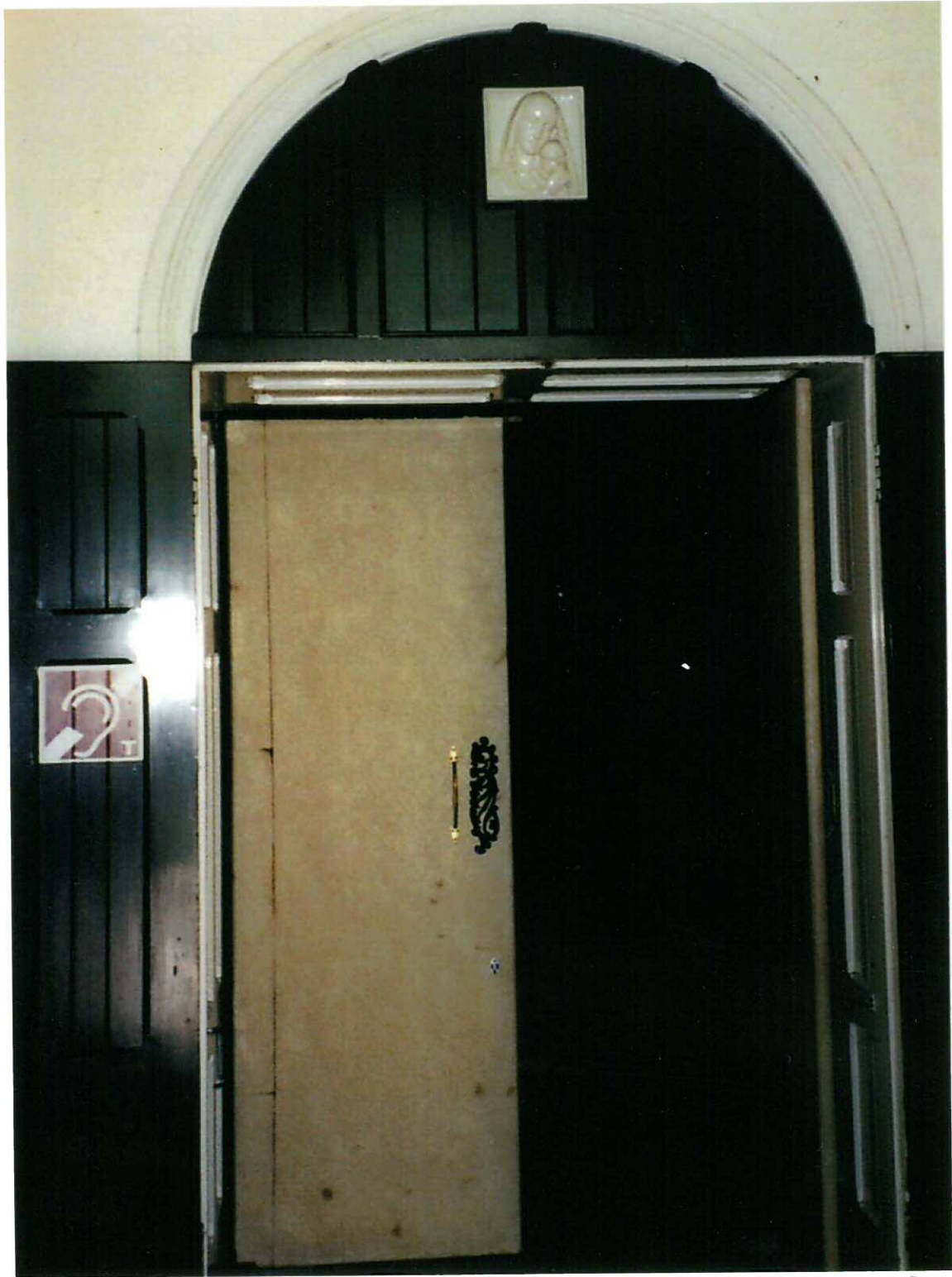
Now, a comfortable, flexible space



Limestone paving brightens the east end











“ an open and friendly welcome could be created if a visual connection was made to the interior.... ”

New door case at the transition between the Georgian tower and Victorian Gothic interior



