

# Welcome back ... to the Big Update 2023

*The Historic Religious Buildings Alliance*  
[hrballiance.org.uk](http://hrballiance.org.uk)

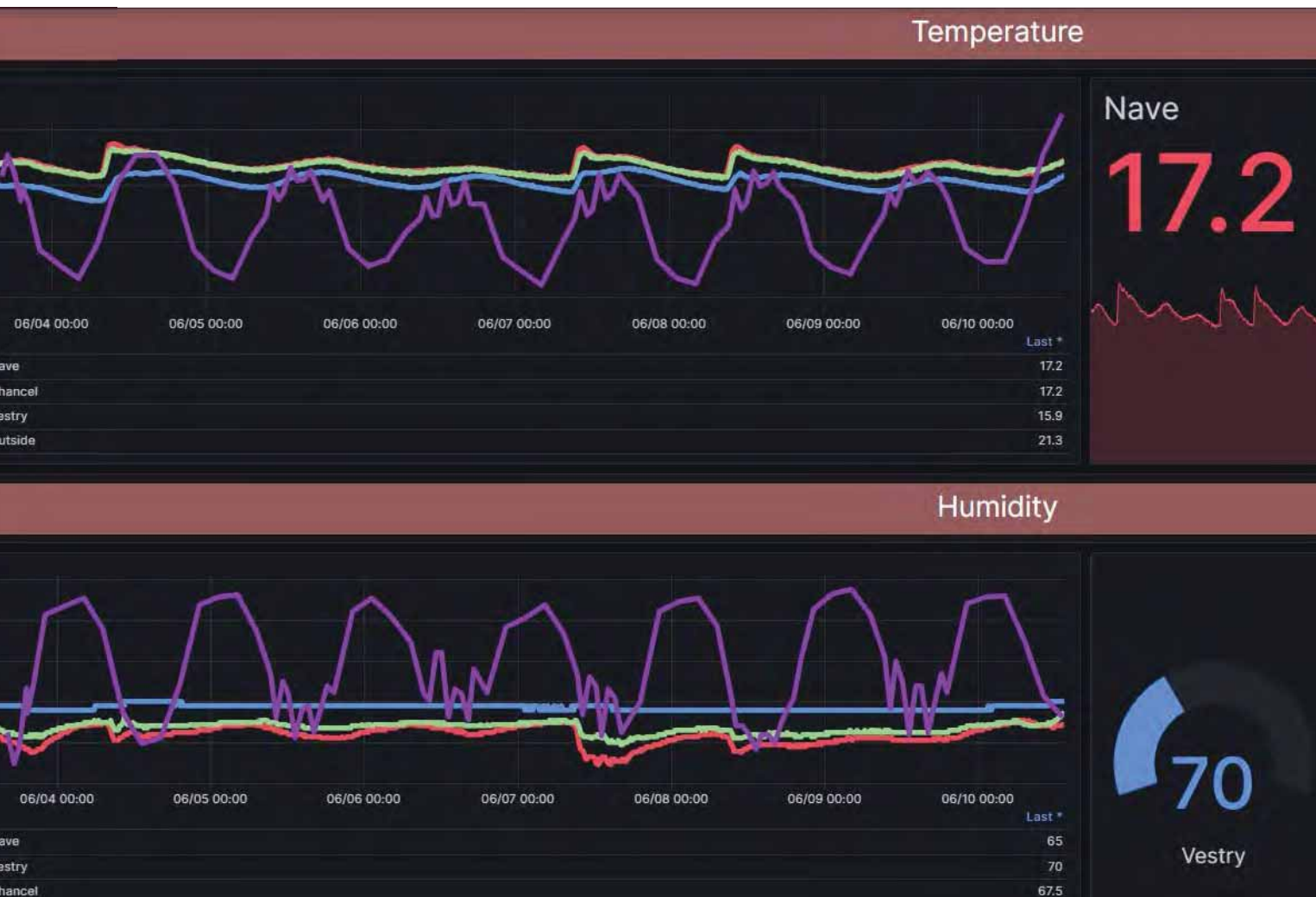
## **Chairs**

Afternoon 1: Becky Payne

Afternoon 2: Charlotte Dodgeon



# Cheribim Ltd: remote sensing pilot 2023 - Innovate UK



Innovate  
UK



Get in touch! [katie@cheribimapp.com](mailto:katie@cheribimapp.com) /

LinkedIn

# The Big Update 2023

*The Historic Religious Buildings Alliance*  
[hrballiance.org.uk](http://hrballiance.org.uk)





# Community leadership in conservation of table tombs in the churchyards of Gloucestershire

---

# The Big Update 2023

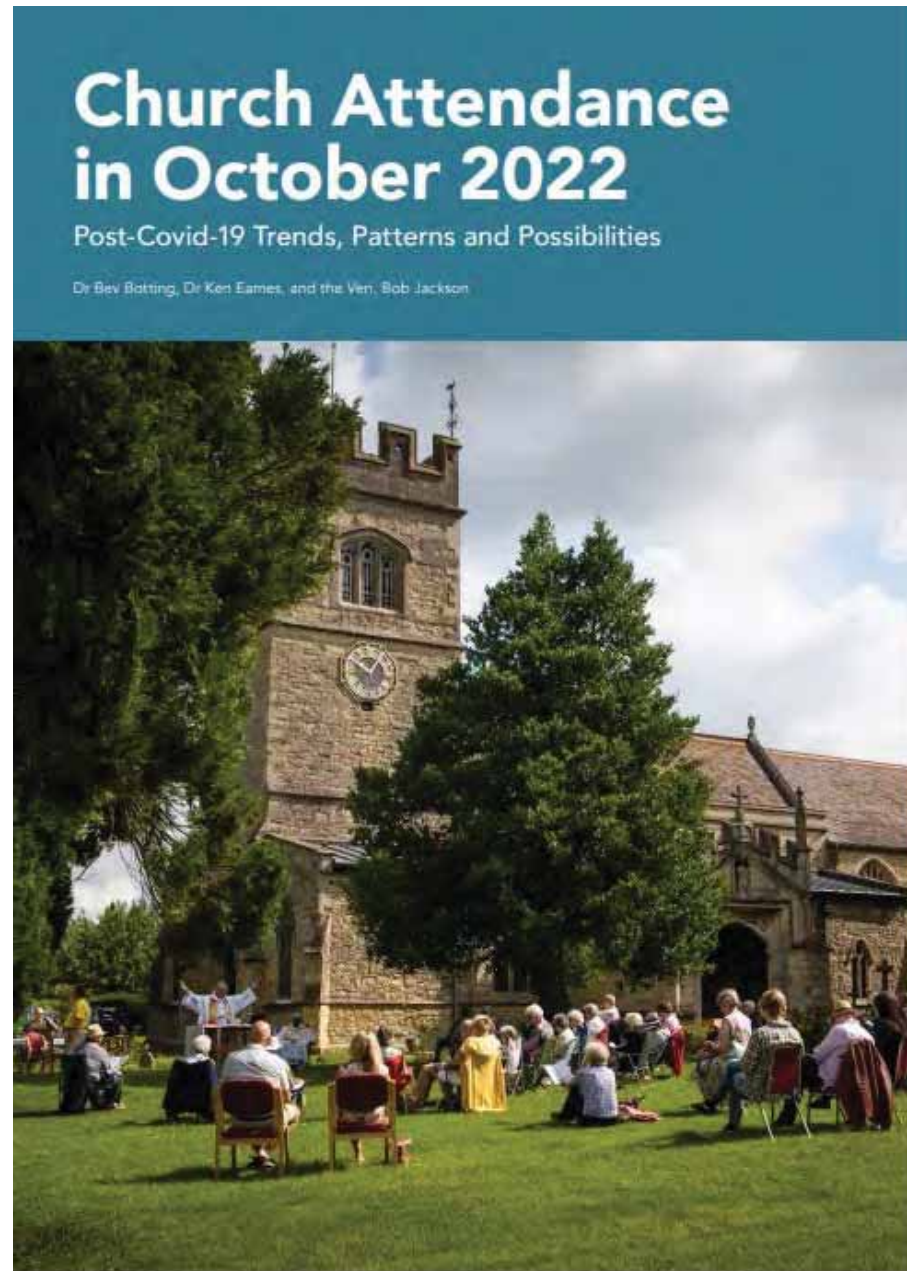
*The Historic Religious Buildings Alliance*  
[hrballiance.org.uk](http://hrballiance.org.uk)

# Church attendance post-Covid and its implications

Dr Bev Botting

For The Big Update  
Wednesday 14 June 2023

# Church attendance in October 2022— post-covid-19 Trends, Patterns and Possibilities





# Church attendance in October 2022 – post-covid-19 Trends, Patterns and Possibilities

Dr Bev Botting (Data Analyst, Diocese of Oxford, & freelance statistician)

Dr Ken Eames (Senior Statistical Researcher, Church of England)

Venerable Bob Jackson (Church Growth consultant)

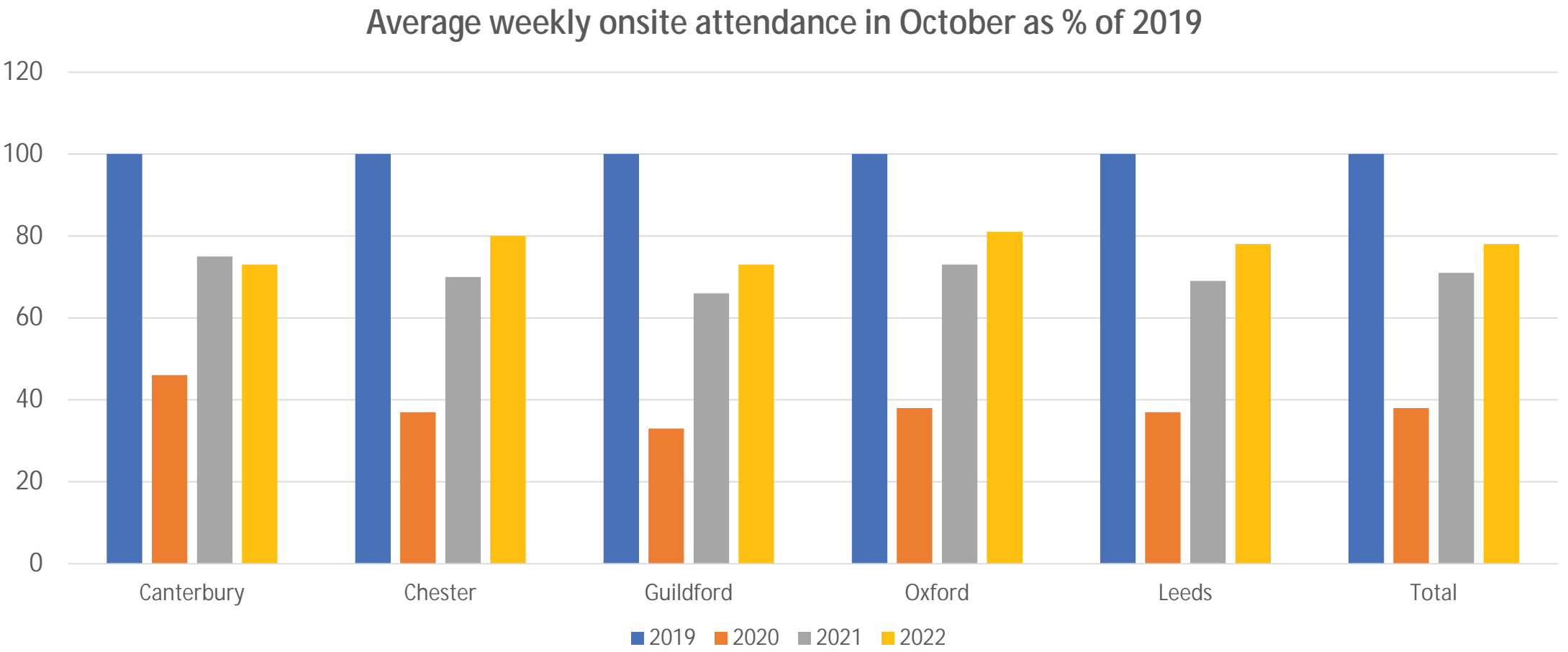
[Post-Covid-19 Trends, Patterns and Possibilities - Diocese of Oxford  
\(anglican.org\)](https://www.anglican.org/post-covid-19-trends-patterns-and-possibilities-diocese-of-oxford)



## Study aimed to answer 4 questions.....

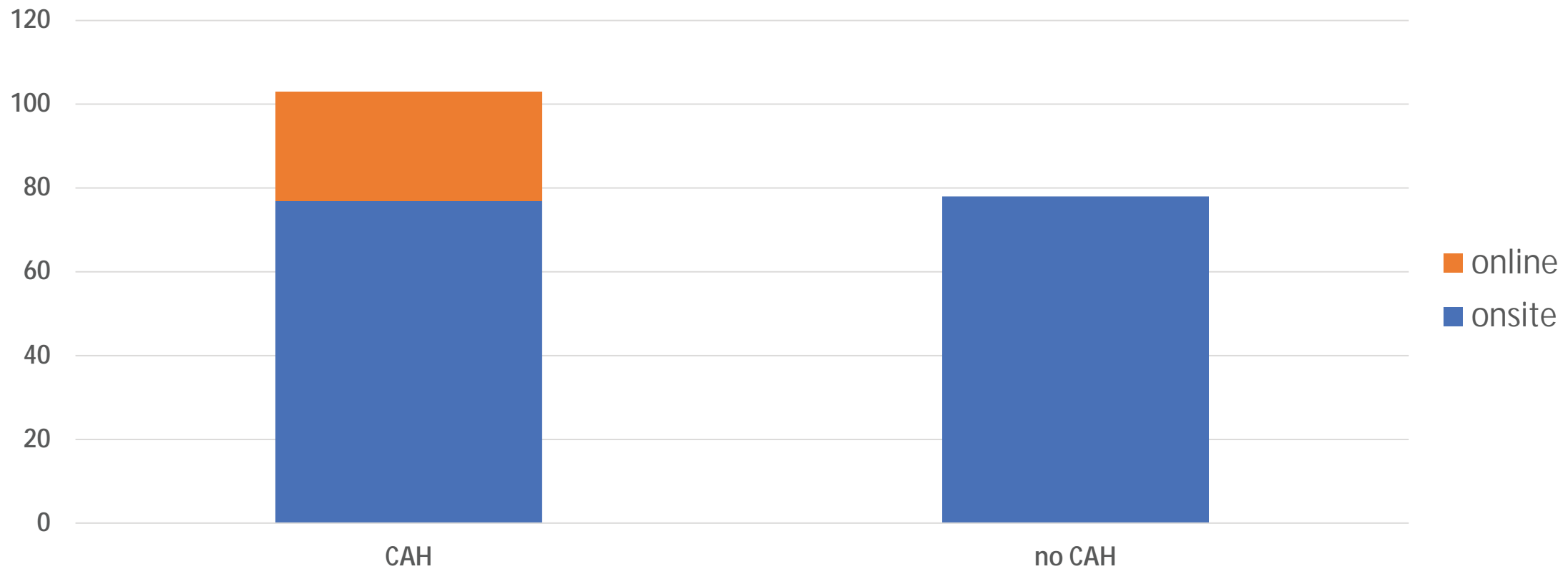
- Q1: How far has church attendance recovered after covid?
- Q2 What are the patterns and variations in the recovery?
- Q3: Why has a full recovery not yet happened?
- Q4: How can further attendance growth be encouraged?

# Q1: How far has church attendance recovered after covid?



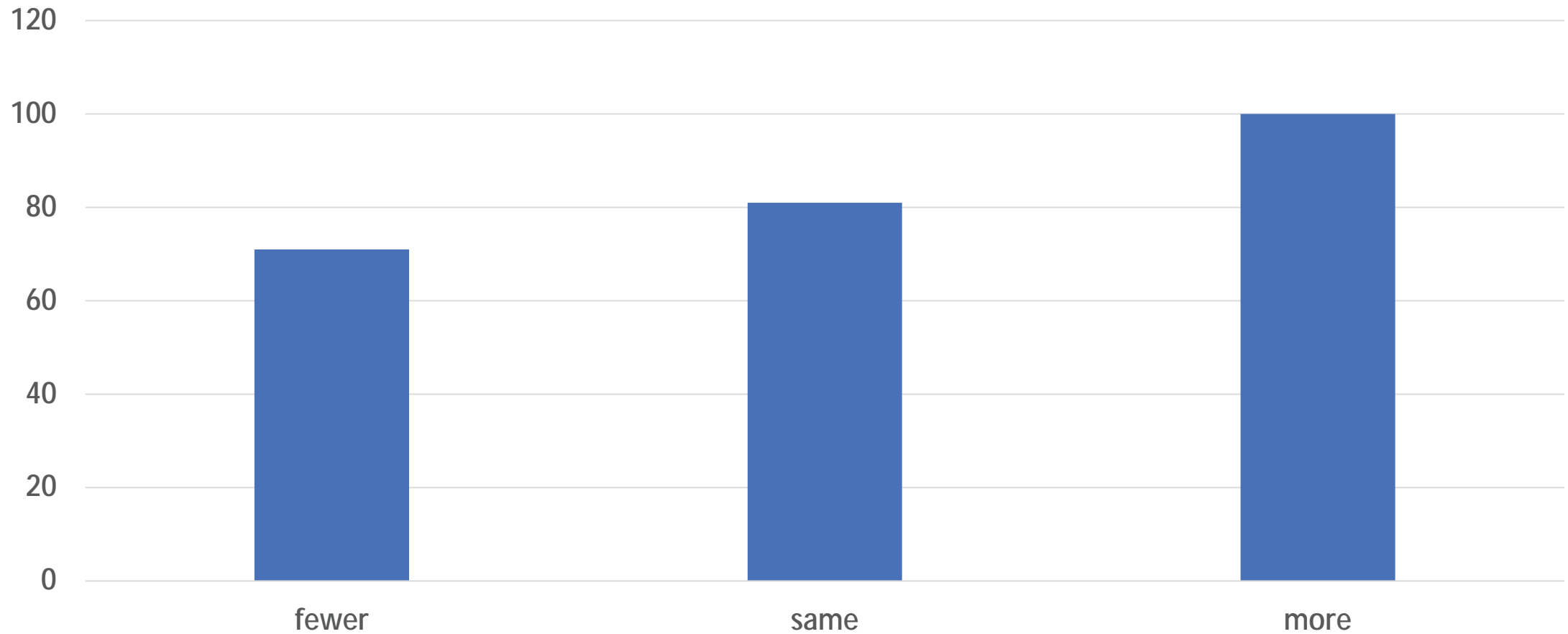
## Q2 What are the patterns and variations in the recovery?

2022 Average weekly attendance as % of 2019 in churches with and without CAH (online)



# Q3: Why has a full recovery not yet happened?

Average weekly attendance 2022 as % of 2019 in churches with fewer, the same and more services



## Q4: How can further attendance growth be encouraged?

- Invite and welcome
- Plant new services and congregations



## **Q4: How can further attendance growth be encouraged?**

- **Make church and services available every week**
- **Focus on children and families**
- **Don't necessarily abandon online**

# Reflections

- Continued decline is not inevitable
- Restore services or replace with something more needed
- Provide for families and children

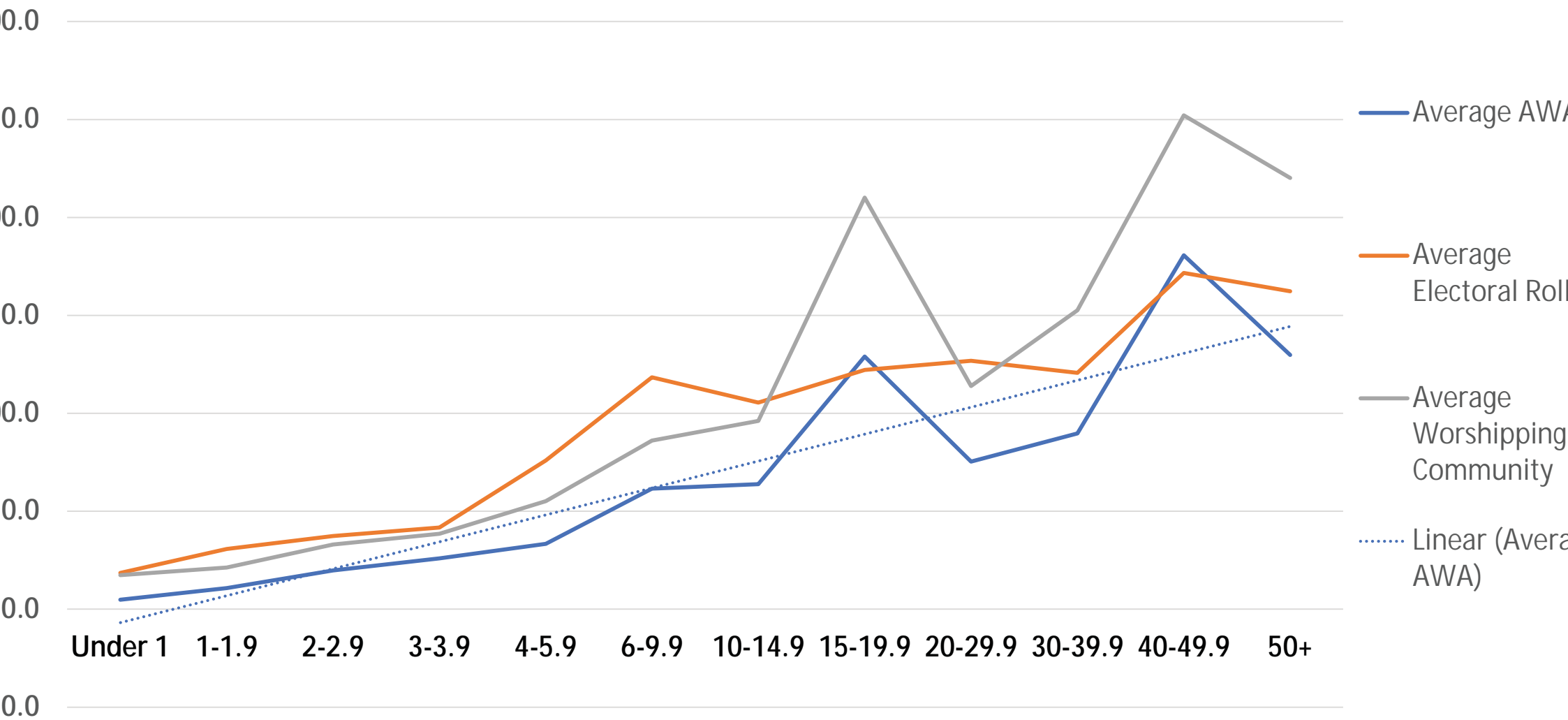
# Articles of Enquiry

Bespoke questions can be asked using the national online parish return system'

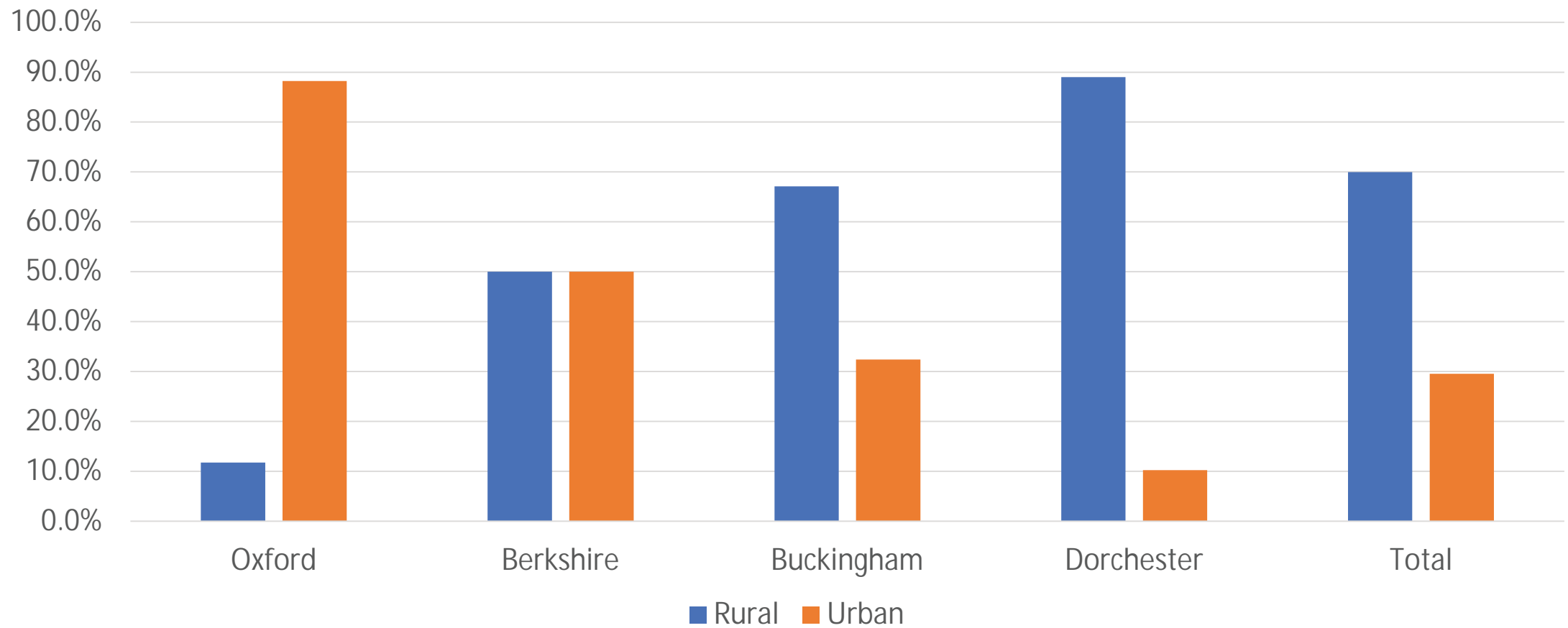
This year we in the Diocese of Oxford asked our parishes about:

- Environment
- Children and young people
- New congregations
- Social action
- Discipleship

# Energy – hours building open

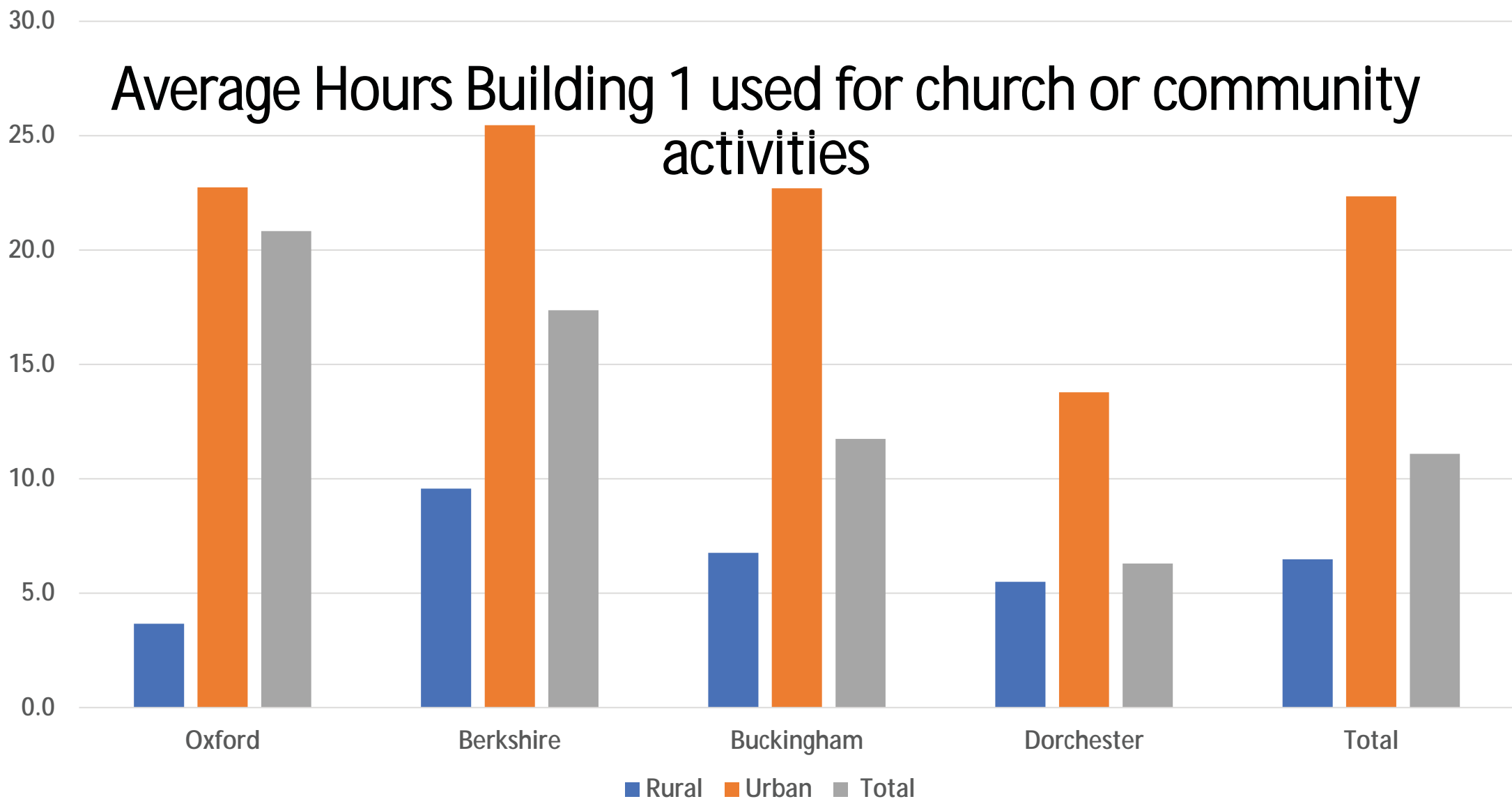


# Percentage of parishes by urban/ rural and by Archdeaconry

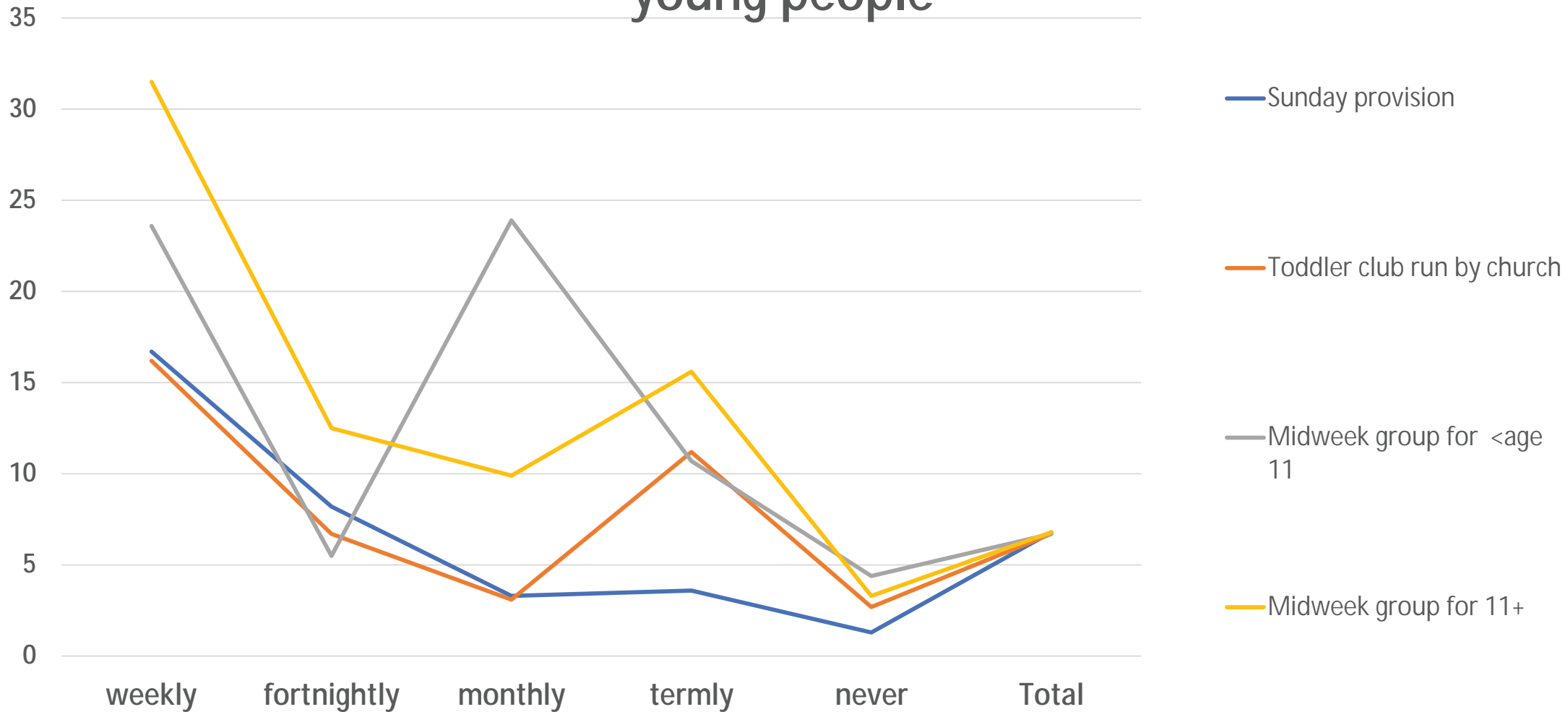




# Average Hours Building 1 used for church or community activities



# Child AWA associated with provision for children and young people



# Social Inequality

Parishes stating they have offered:

- Warm meals: 91
- Food parcels: 104
- Warm spaces: 164
- Advice e.g. debt counselling: 36
- Other: 163

# Social Inequality: Other support given:

- Our ACT charity provides support for the homeless with night shelters and those leaving prison
- Sanctuary Café for asylum seekers and refugees. Over 100 gather each Friday in the Greyfriars Atrium.
- The PCC members are funding the Chaddleworth winter club which provides soup roll and tea and coffee in the local pub on a Monday
- Space for children's homework completion.
- As a church we support CAP and promote its activities rather than providing debt counselling directly.

# Any Questions ?

[bev.botting@oxford.anglican.org](mailto:bev.botting@oxford.anglican.org)



# The Big Update 2023

*The Historic Religious Buildings Alliance*  
[hrballiance.org.uk](http://hrballiance.org.uk)



CATHOLIC BISHOPS' CONFERENCE  
OF ENGLAND AND WALES

# LIVING STONES

SOPHIE ANDREAE  
CBE DSG FSA IHBC



# LIVING STONES

A Celebration of Achievement

Grants for Programmes of Major Works 2020–2022



## Grants for Programmes of Major Works:

Locations of Grant Aided Projects  
2020 – 2022

North East & Yorkshire 9 Projects

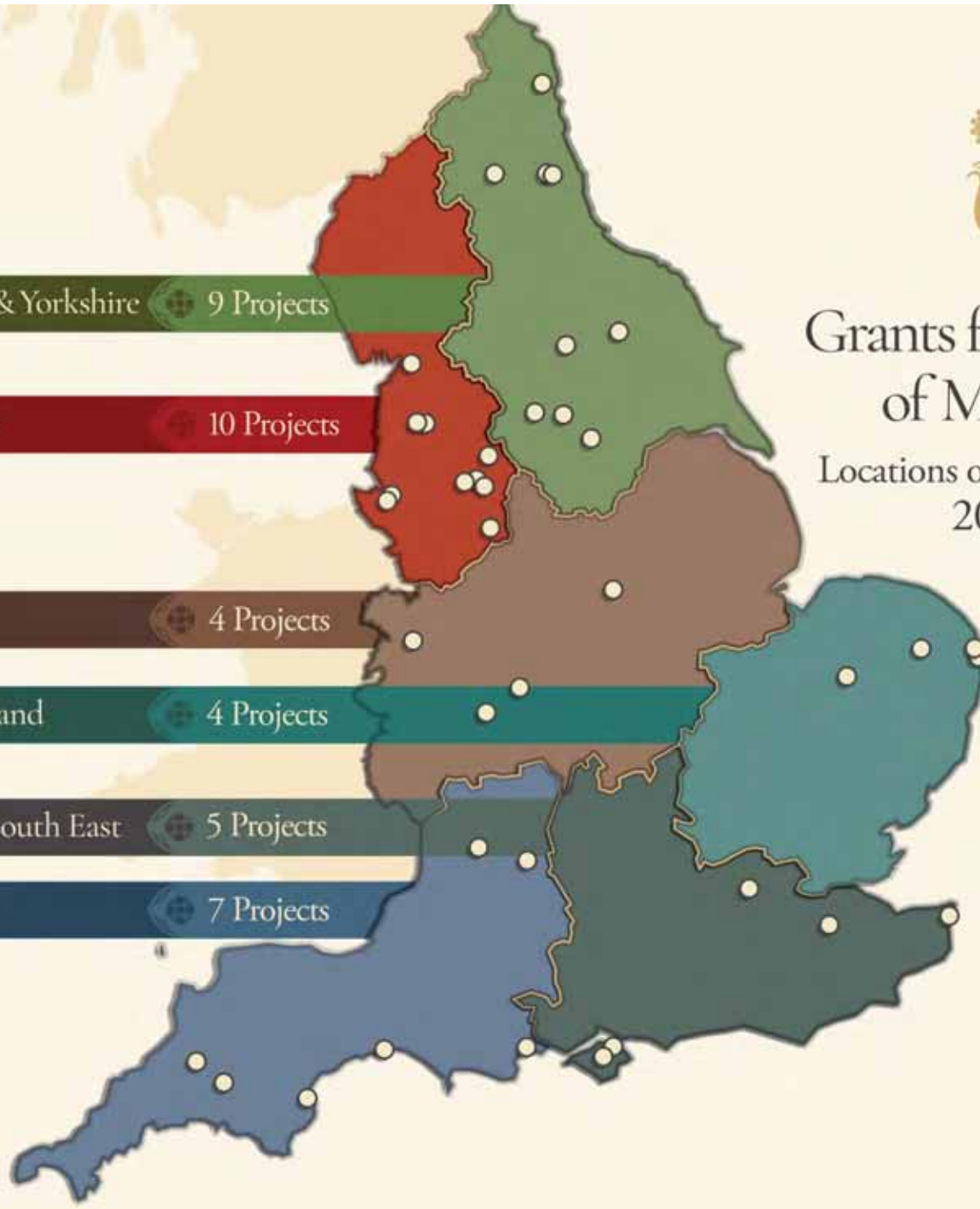
North West 10 Projects

Midlands 4 Projects

East of England 4 Projects

London & South East 5 Projects

South West 7 Projects

















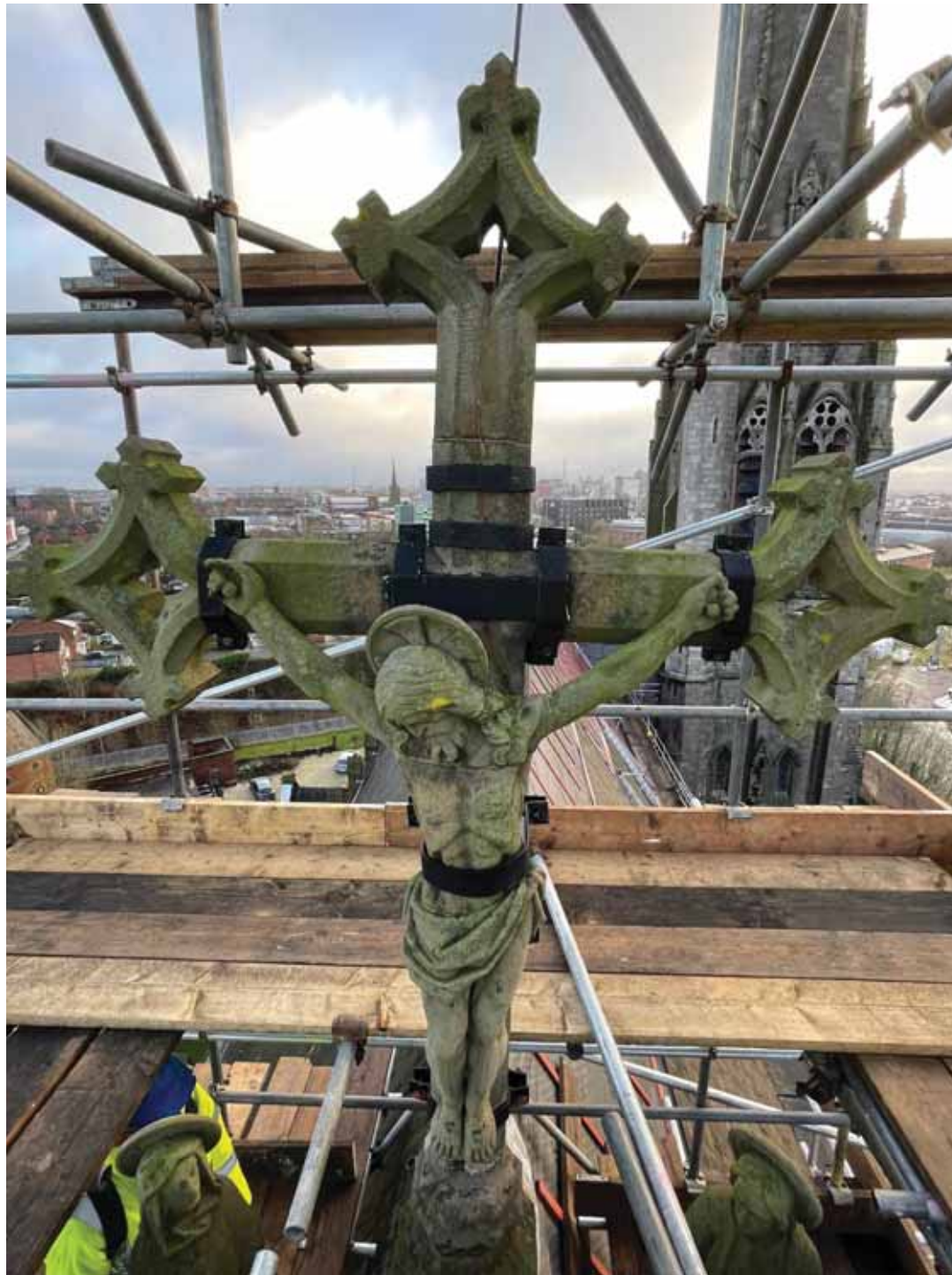






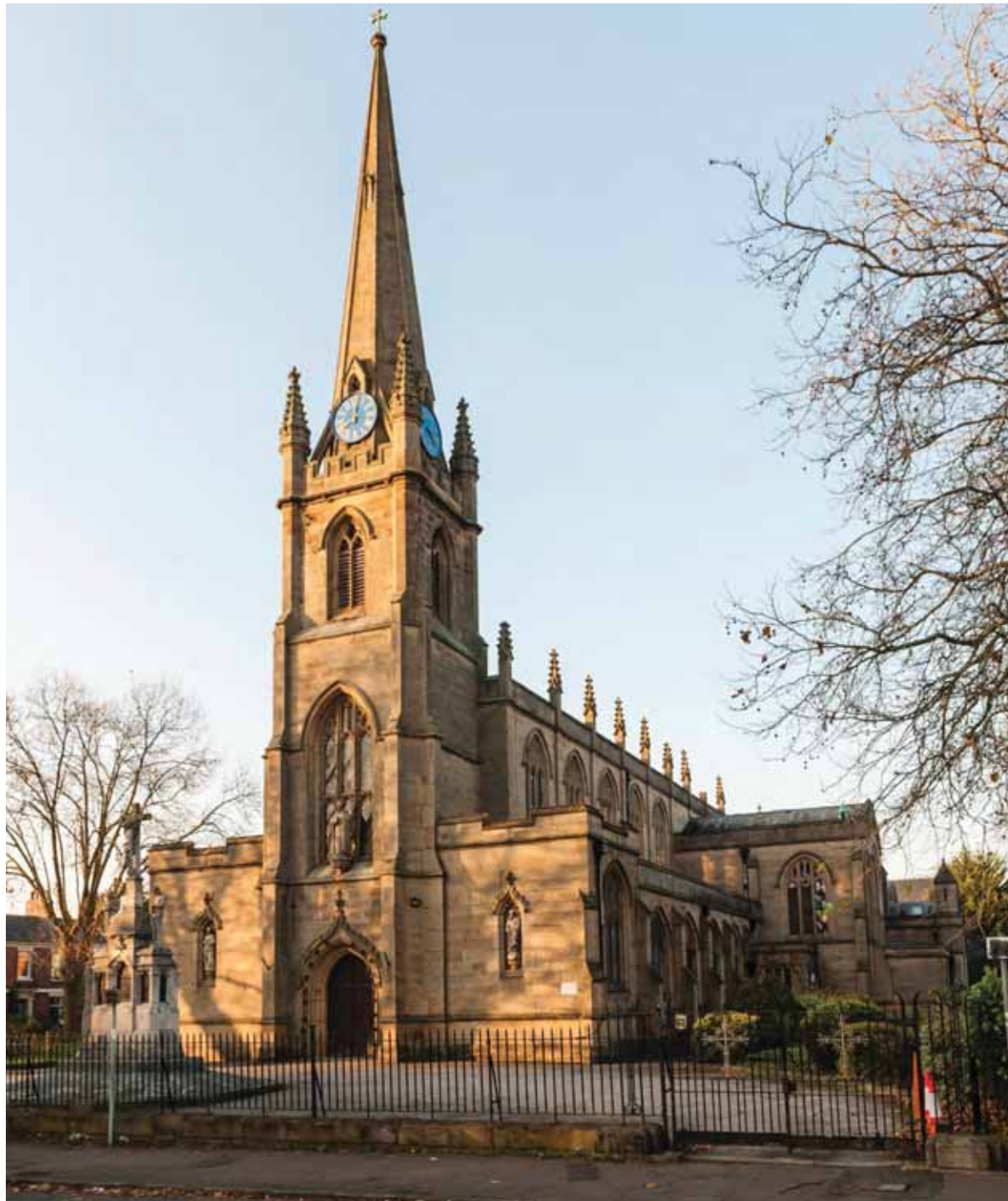


























































# The Big Update 2023

*The Historic Religious Buildings Alliance*  
[hrballiance.org.uk](http://hrballiance.org.uk)



The background of the slide is a photograph of St. Paul's Cathedral in London, taken from a low angle looking up at the spire. The sky is a clear, pale blue. The text 'The Heritage Alliance' is overlaid on the left side of the image.

The  
Heritage  
Alliance

# 2023: Political Turmoil & Heritage: an insider's view from here to the election



@Heritage\_NGOs



## Post-pandemic Politics



## Ministers in Charge of Heritage 2001-2023



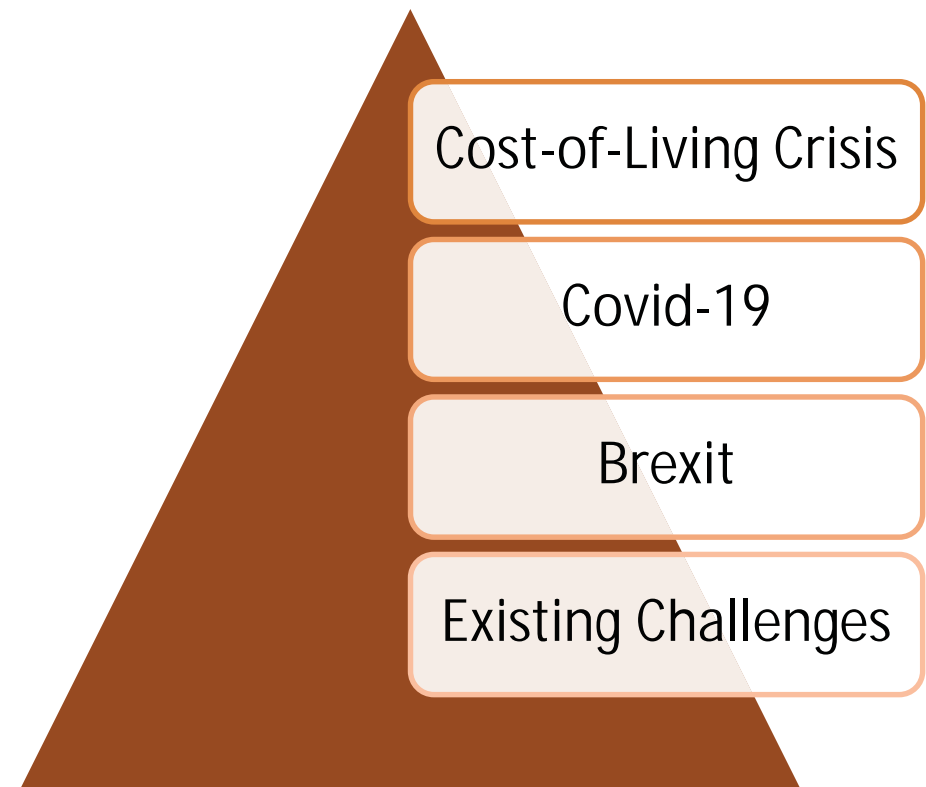


# Pandemic Britain





# A Layering of Issues





# History of Challenges



---

Funding

---

Charities and Small Organisations

---

Brexit Aftermath

---

Diversity and Inclusion

---

Skills Gaps

---

Rapidly Changing Digital Landscape

---

Climate Change

---

Lack of Legislative Opportunities



# Existing Challenges were **exacerbated** by continued crises

45% of respondents  
said they found it hard  
to develop digital skills  
due to lack of time  
(DASH Survey 2021)

41% of  
organisations reported  
that their financial  
assets had decreased  
over the last 18 months.  
• (Rebuilding Heritage)



“The issues we were facing predated Covid  
although some issues have developed  
worsened since, especially staff wellbeing  
(Rebuilding Heritage Participants)

## Cost of Living Crisis

- Energy Bills/Heating
- Staff (including retention of volunteers, staff, salary, recruitment, and redundancy)
- Consumer Confidence
- Cutting Costs
- Covid Impacts
- Climate change and sustainable energy
- Funding



# Challenges Ahead

We spoke to historic places of worship and they revealed some of their key concerns resulting from the Cost of Living crisis.

## Rising energy bills

This is currently the biggest area of concern for our historic places of worship



## People

Staff and volunteer recruitment



## Consumer Confidence

Visitor numbers and consumer spending



## Cutting Costs

Rising organisational costs

## Covid Impacts

The need to use reserves





# A Time of Opportunity for Heritage



Many new people have  
accessed local green,  
blue and built heritage



New recognition that  
heritage delivers more  
for society goals



New skills help diverse  
audience to explore  
their heritage



# Key Moments:

1. Levelling Up and Planning B
2. Heritage Manifesto 2023
3. Party Conferences & Manifest
3. Autumn Spending Review
4. Elections





**Demolitions**



**Energy**



**Wellbeing**



**Craft Skills**



**AT**



**Habitats**

Manifesto Priorities  
for Historic Places  
of Worship





The  
Heritage  
Alliance

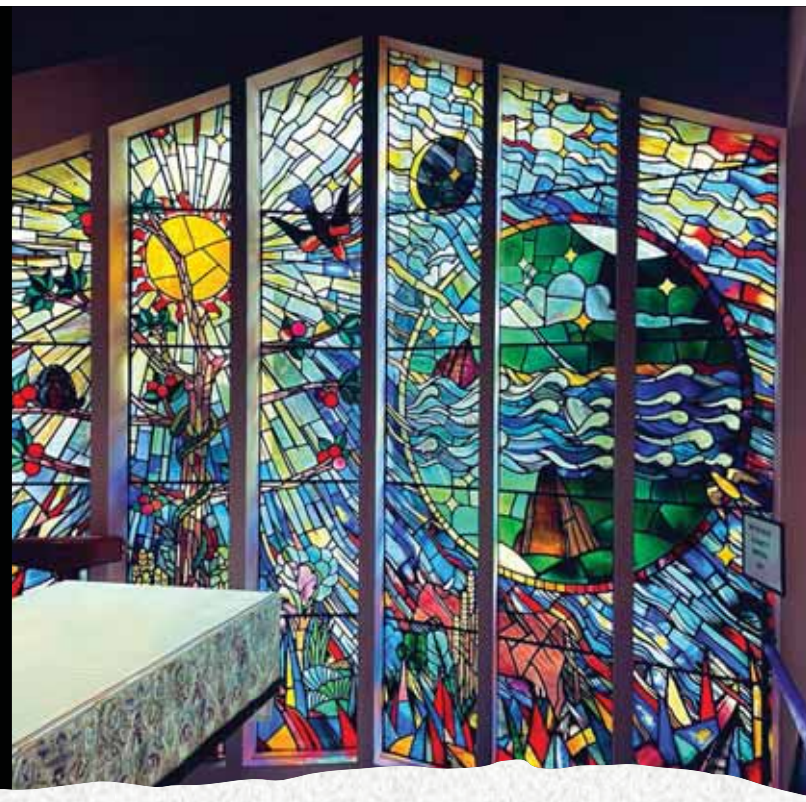
# Heritage Debate 2022

Heritage in 20 Years  
what will matter most?

Against this backdrop of history, there is a growing consciousness of the role of heritage in our lives and how important it has become in understanding the role it plays."

B'nai B'rith UK Jewish Heritage Committee





# Heritage at the Heart of Place

- “The question we should really be asking is what matters most to society, and how can heritage help to achieve the change that our society needs? ... I would like to see heritage professionals genuinely collaborating, sharing their knowledge and talents to achieve the best possible outcomes for heritage and, more importantly, for people.” (ICON)



# "Heritage Without People is Nothing"

- "Heritage without people is nothing, so continued engagement, passion and enthusiasm for the sector, combined with an understanding of its value, will surely still be what matters most – and all else will flow from this." (National Historic Ships)#

- "All these people share so much more with each other than what divides them. Heritage is one way of expressing these commonalities and in that way build stronger and more peaceful societies." (UNESCO UK)



**Churches are so much more  
than places of worship**





# Diversity is a strength

---

**“The history we tell will become richer and engage us in fascinating forms taking full advantage of the technologies we develop. Understanding our diverseness and uniqueness will enrich society.” (LeLay Architects)**

**“The nature of volunteering, the recruitment, training and support will need to adapt to meet the interests and needs of new generations.” (Diocese of Ely)**

**“Rather than asking how or why we can attract diverse groups to our organisations, we should question what barriers are in place to prevent them.” (The Linen Hall Belfast)**

# Heritage Heals

- “Heritage engagement can be included in the range of non-clinical options for tackling health inequalities and reducing prevalence of social determinants of poor health. I have witnessed the power of heritage engagement for reducing the impacts of loneliness, stress and anxiety on university students and community members through Prescribe Culture programmes”

(Prescribe Culture)





# Environment and Change

"Change is not synonymous with heritage, and yet perhaps it could be. There is a real risk that in our desperate attempts to perfectly preserve the UK's heritage, we will in fact inadvertently end up destroying it" (Historic Houses)

A priority for The Church of England, and the heritage sector, cannot just be on 'how' the heritage is managed, it must focus on 'who' is managing it to ensure they have the resources necessary to be effective and sustainable. (Diocese of Ely)



Heritage responds -  
**Taking positive action  
on climate change**

Historic  
Environment  
Forum



# 3 Ways Forward

## The Heritage Alliance



Connect



Be Heard



Tool Up



@Heritage\_NGO

# The Big Update 2023

*The Historic Religious Buildings Alliance*  
[hrballiance.org.uk](http://hrballiance.org.uk)



heritage open days

Unwrapping your...

# Too Good to be True' Festival

The Big Update– 14 June 2023

In partnership with  
 National Trust

Supported by players of



Awarded funds from





SEPT 2023

FREE TO  
EXPLORE



4,945 Events



Showcase

1 million Visits

- 32% Visitors C2DE
- 31% not been in last year
- 58% visited more often



Gateway

2,150 Organisers

- 43,500 volunteers
- 5,400 staff

80% visitors more  
**proud** of local area

66% visitors feel more  
**part of local  
community**



Community

# HOW IT WORKS

---

Nationally  
supported



Locally  
driven

In partnership with  
**National Trust**



# R COMMUNITY

---

Celebrating the people  
& places that make our  
festival happen!

Do you notice  
anything?

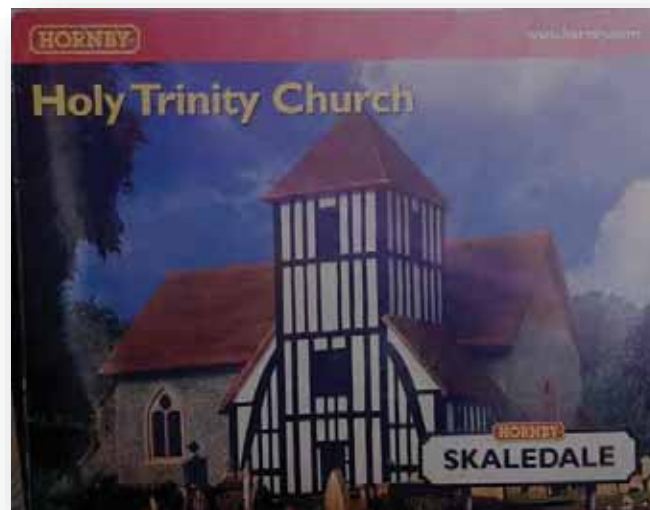




# ASTE OF 2023



Years of bell ringing at Church of St. Mary  
aints, Church Lane, Whalley, Clitheroe,  
shire



Discover a model railway & village at  
St Peter's Church, Worcester,



Discover Dinosaurs, fossils and  
meteorites at Effingham  
Methodist Chapel, Surrey



Stunning Stained Glass at  
Bradford Cathedral



Go Back to Bach at St. Peter Mancroft  
Church, Norwich

# WHAT'S IN IT FOR YOU?

---



Get  
Noticed



Generate  
Income



Get  
Support



# T NOTICED

A chance to...

Tell stories

Do something different

Work in partnership

Think nationally

And it pays off!





# ERATE INCOME

FREE! But that doesn't mean there isn't income!

Estimated  
**£6.1 million**  
benefit to local area economies

+

Estimated  
**£5.5 million**  
benefit to individual sites/events

=

Total estimated  
**£11.6 million**  
benefit to local area economies  
including spend at individual  
sites/events



# SUPPORT

---

Training webinars &  
Community cafes



Guidance packs

Public liability  
insurance



Promotional material

It's all **FREE!**



heritage open days

Get Involved - Spread the word – Talk to Us!

[info@heritageopendays.org.uk](mailto:info@heritageopendays.org.uk)

 @heritageopenday

 @heritageopendays

 @heritageopendays

In partnership with  
 National Trust

Supported by players of  
 PEOPLE'S  
POSTCODE  
LOTTERY

Awarded funds from  
 POSTCODE  
EARTH  
TRUST



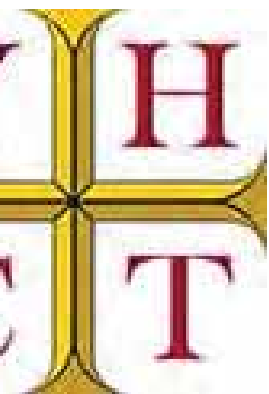
# The Big Update 2023

*The Historic Religious Buildings Alliance*  
[hrballiance.org.uk](http://hrballiance.org.uk)

# Yorkshire Historic Churches Trust

## Digital Apprentices Project

Dr Louise Hampson



# e challenge/opportunity

Supporting churches to use digital platforms  
Tools to

Tell their story

Engage and encourage visitors in person  
and virtually

Make new partnerships and create new  
offers

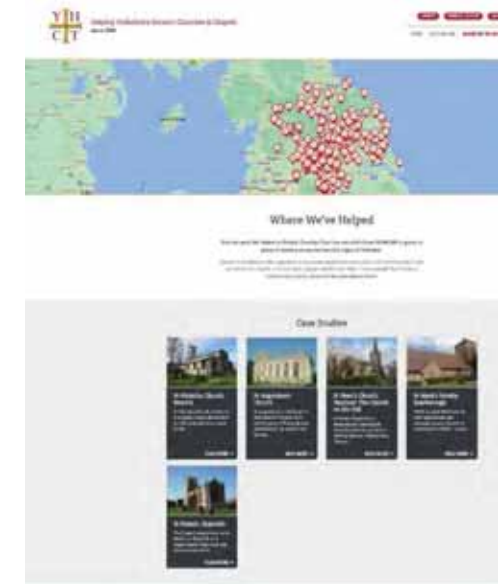
Encourage online donations

Enhance profile for external funders like  
YHCT/NCT

Building capacity and confidence in  
churches

Encourage students to explore careers in  
church heritage sector

<https://www.yhct.org.uk/>





# What we did in 2022

Recruited 20 Masters

students from UoY

Recruited 7 churches

Delivered online training  
sessions 'starting where  
churches are'

Visited all partners

Mentored students

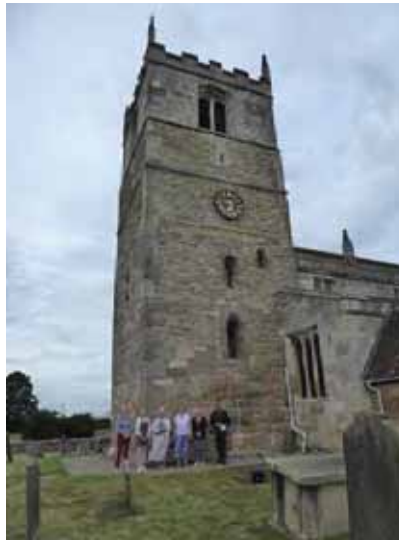
Reviewing online presence

– presenting back to

partner churches

Co-designed content and  
reviewed

Created/uploaded where  
required



*"I had no idea what churches did for their communities...or what challenges they face...."*

*"It's made me want to go and explore what my local church is up to"*

*"I didn't realise how challenging accessing social media was for some"*

Social Media: Facebook, Instagram, YouTube, Twitter,  
TikTok - which is the best platform for you?



# Outcomes

dated content for EXPLORE  
rton in Lonsdale, Thornton  
Lonsdale, Skipwith,  
ddersfield)

ation of short 'Top Ten Things  
ee..' Trails aimed at widening  
and diversifying reach of heritage  
tent

lding confidence....

. Thornton in Lonsdale  
bracing the potential to  
olicise their successes with  
eds Diocese

couraging greater engagement  
n YHCT e.g. Yorkshire  
urches Day





comes

rooke St Michael

er online presence

photographic survey of the

n and the medieval grave slabs

could help them celebrate the

anniversary



aster Minster

h its [Twitter feed](#), create

ram account and signpost

e to its to You Tube channels

ersfield parish church

hed the first of a series of social

posts linked across their

g Facebook and Twitter

nts, and longer blog posts





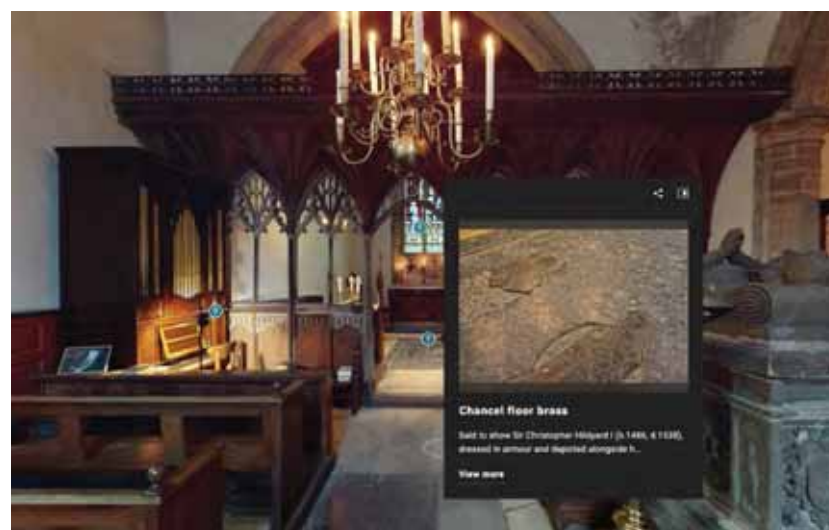
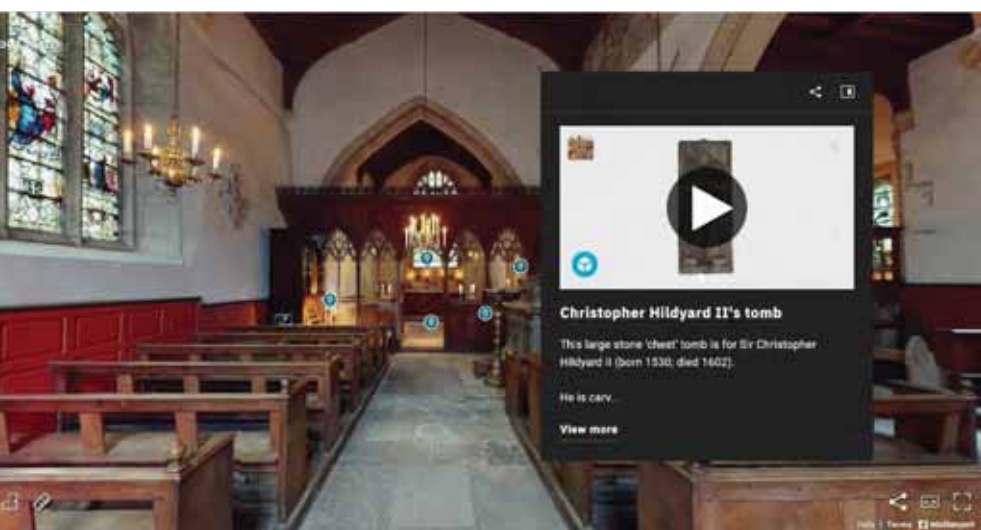
# Germain, Winestead

Interactive model at:

<https://my.matterport.com/show/?m=hxFCXP>



# German, Winestead





# See you at the Big Update 2024

*The Historic Religious Buildings Alliance*  
[hrballiance.org.uk](http://hrballiance.org.uk)