

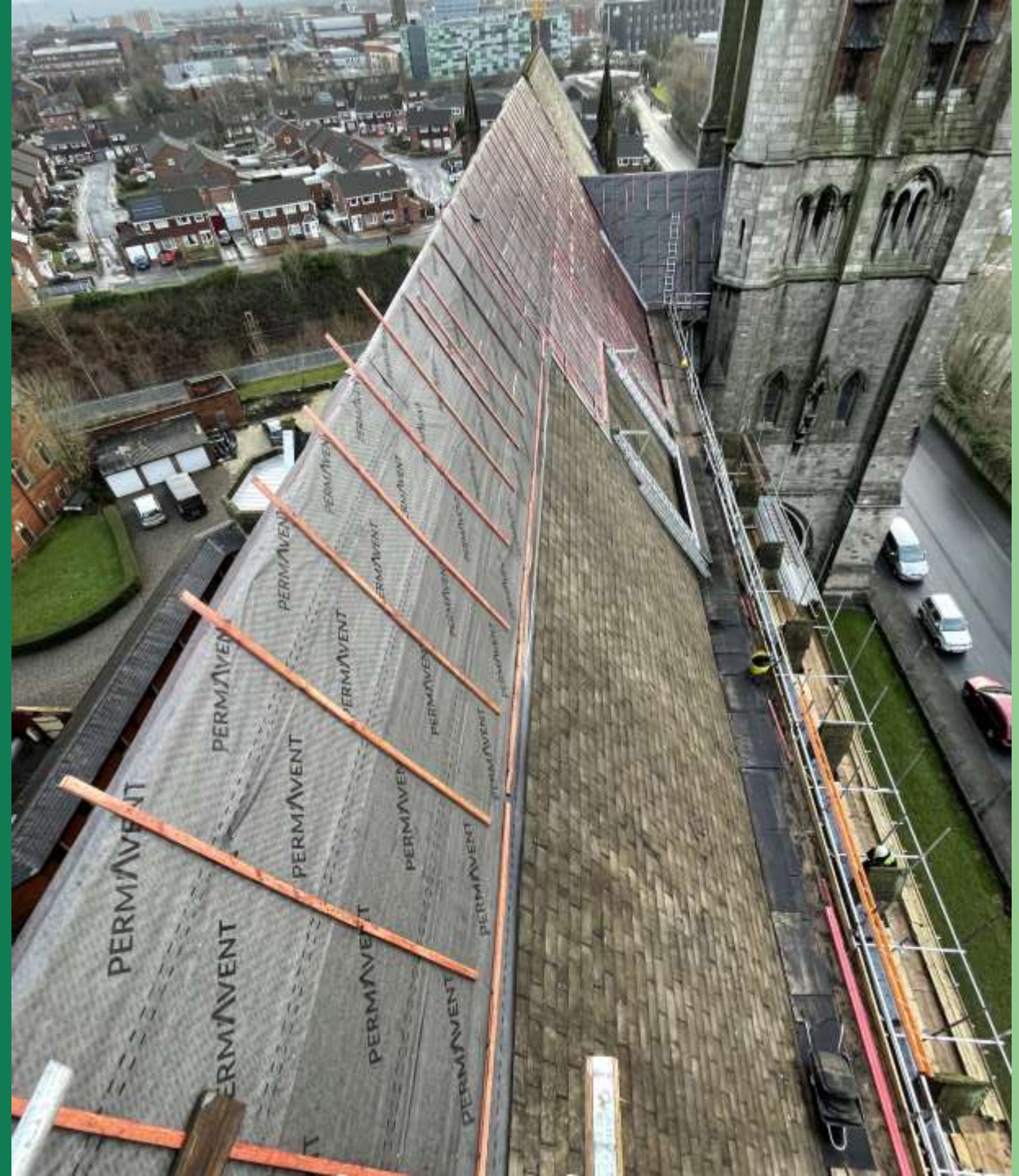


## What does HE do for places of worship?

Diana Evans, Head of Places of Worship

[Diana.evans@historicengland.org.uk](mailto:Diana.evans@historicengland.org.uk)

Wednesday 30<sup>th</sup> April 2025



# What is HE

Public body funded by DCMS

Historic England protects and brings new life to the heritage that matters to us all, so it lives on and is loved for longer.

- Active participation
- Communities connected by heritage
- Thriving places with vibrant and sustainable local heritage



# Statutory duties

## HE's engagement with Government, local authorities and legal processes

- Advice to Government, including research and responses to Parliamentary Questions
- Designation, including listing, advising the Secretary of State including Listing Selection Guides. Introductions to Heritage Assets and guidance e.g. new translations in Romanian, Panjabi, Urdu, Tamil, and Malayalam
- Heritage at Risk - an Official Statistic
- Consultee about one member of each DAC [who is not an HE representative or nominee]
- Statutory Consultee to the Chancellor on faculty applications [Faculty Jurisdiction Rules 2015, rule 4.4 and Schedule 2]
- Closing and Closed Church of England church buildings





Villages  
Stations  
Theatres  
Bridges

# Historic Temples

Towers  
High Streets  
Monuments  
Factories  
Schools  
Mills



# Active participation

## Helping people to care for the places they care about

- Pre-application advice to places of worship and cathedrals concerning proposals for changes to the building (inside and out) and its setting
- Technical guidance and free webinars on materials, methods, conservation, climate change adaptation and energy efficiency mitigation
- Online Statements of Significance and Need tools
- Value of Maintenance 2019
- Support Officers
- Places Of Worship Forum





# Communities connected by heritage

## Celebrating local heritage and character

- Development advice to help POW achieve changes and heritage regeneration
- Taking Stock: Catholic Church and Society of Friends
- Major Parish Churches
- Research and publications e.g. RC churches, chapels, mosques, Jewish burial grounds, Buddhist buildings, Hindu, Jain, Baha'i and Zoroastrian buildings
- Wellbeing and National Academy of Social Prescribing



# Thriving places

## Sustainable futures for communities

- Bats in Churches and Living Alongside Bats in Churches grants
- Moving Pictures
- POW Working Group Looking Forward to 2042; recent focus LPWGS and new government
- Cultural Heritage Capital; research into what people would pay for historic church building fabric
- Community value of historic buildings; ChurchWorks research into impact of heritage to those using Warm Welcome Spaces in historic buildings



***We're making the case for listed places of worship as:***

- ***heritage in their own right***
- ***social and cultural centres for communities***
- ***as faith buildings.***

***We support the people who look after them so they can share them with their communities and keep them open as places of wellbeing for people of all faiths and none.***

